

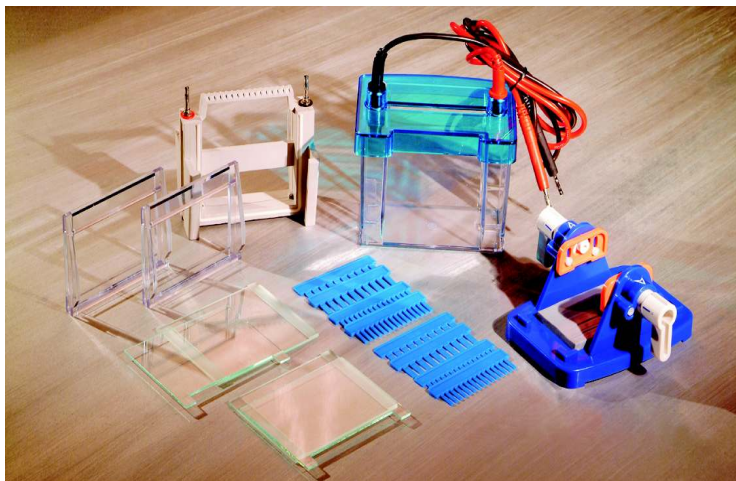
Mini EaseCell™ System

Be at Ease with Electrophoresis



Introduction

EaseCell™ Electrophoresis system is an easy to use system manufactured from high quality acrylic with platinum electrodes. Its seamless, injection-moulded transparent base prevents leakage and breakage. The Easecell is designed to cut the power off automatically when the user opens the cover.



Features:

1. Simple assembly
2. Novel Gel casting stand
3. No need for spacers
4. 3 different comb thicknesses
5. Automatic cut-off facility with lid removal
6. Run Two gels at one time
7. Good heat dissipation

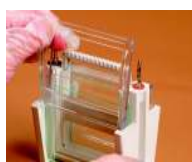
Specifications:

1. Gel dimensions: 82mm x 82mm
2. Samples: 10 or 15 samples per run
3. Comb thickness: 1.0mm and 1.5mm.
4. Running time: 45-60 minutes.
5. Buffer volume: about 750ml.
6. Cell size: 150mm(L) x 140mm(W) x 100mm(H).
7. Weight: approx 0.9Kgs.

Operation Procedure



Step 1: Tightly align the notched plate against the spacer plate keeping them level at all times.



Step 2: Slide glass plates into the Electrode Stand followed by a casting frame. Repeat the same process for the other side.

Note: For a one gel run use the one gel glass plates on the other side.



Step 3: Place the Electrode Stand into the Casting Clamp.
Note: The rubber cushion on the gel Casting clamp should be cleaned after each use and be air dried or dry it with absorbent paper



Step 4: Push the two handles in the direction shown on the picture.



Step 5: Push and rotate the handle to the desired position



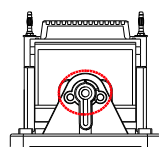
Step 6: Rotate the handle based on the thickness of the gel you are casting. The picture on the left shows a 1.5mm gel



Step 7: Pour your gel



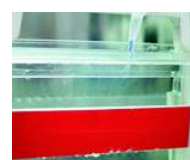
Step 8: Insert the comb.
Note: Do not touch the handles until the gel has solidified



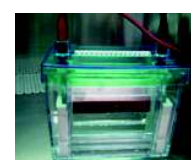
Step 9: After the gel has solidified turn the handles in the opposite direction. The handles will pop out. Remove the Electrode Stand from the Casting Clamp



Step 10: transfer Electrode Stand directly into the external buffer tank



Step 11: Add the buffer solution and the sample.
Note: Avoid the creation of bubbles within the gel rooms



Step 12: place the lid over the tank and connect the cell to a power supply and begin.
Note: If you run one gel rather than two make sure you use the one gel glass plate on the other side of the electrode stand.

Ordering Information

Cat. No	Product Name	Kit Contents	Price
FAENB 001	Mine EaseCell™ Vertical Electrophoresis System	1 External Tank W/leads, 2 Casting Clamp W/Frames 3 Electrode Stand, 4 Casting Clamp, 5 Glass Plate (single gel) 6 4xSpacer Plates, 7 4xNotched Glass Plates, 8 8xCombs	£395