



# LuminolPen HRP

Can't see your Pre-Stained MW Markers  
During Chemiluminescent Development?



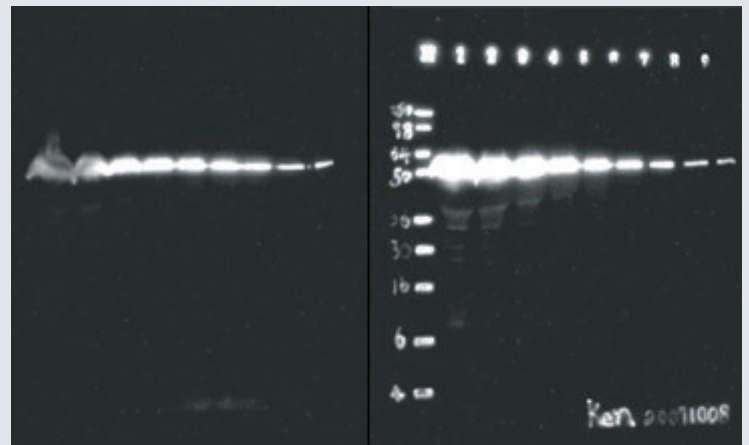
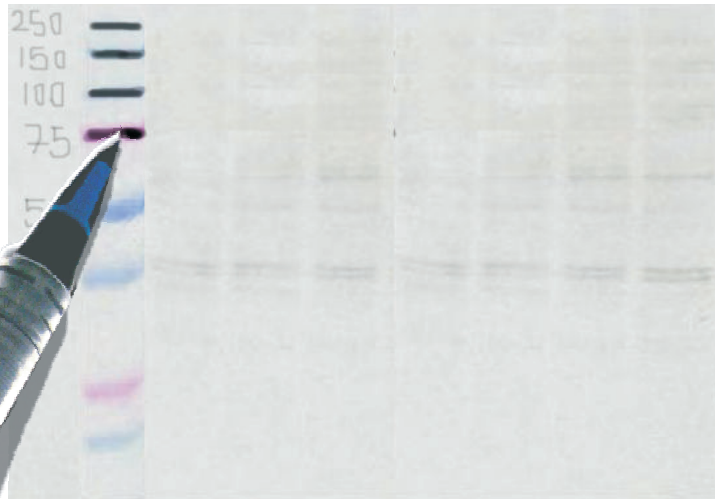
TEL: 0208 123 3116 | FAX: 0800 007 3116 | Email: sales@chembio.co.uk

*Draw a line under your problems with LuminolPen*

■ Detect MW Markers

■ Internal Control

■ Free Hand Notes



Control

LuminolPen

[www.chembio.co.uk](http://www.chembio.co.uk)

Enzyme ink from the LuminolPen is used to draw over your pre-stained marker. You can then block and incubate with the primary antibody as normal. Follow up with your secondary antibody labelled with an enzyme. Develop your colour with the substrate. The X-ray film will show your target protein as well as your MW Marker. The LuminolPen can also be used as an internal control for substrate functionality. Furthermore the LuminolPen gives you the flexibility to make notes on your membrane.